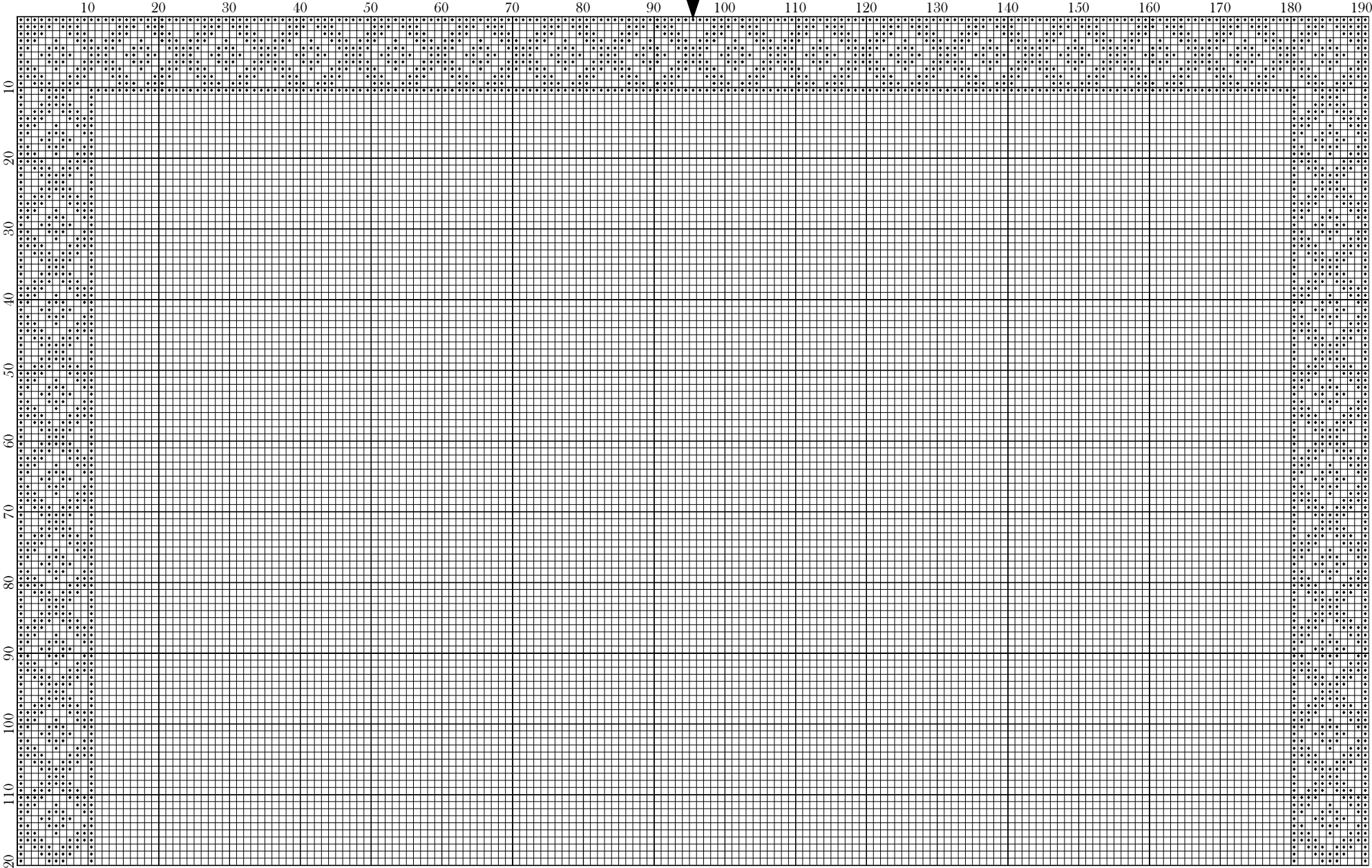
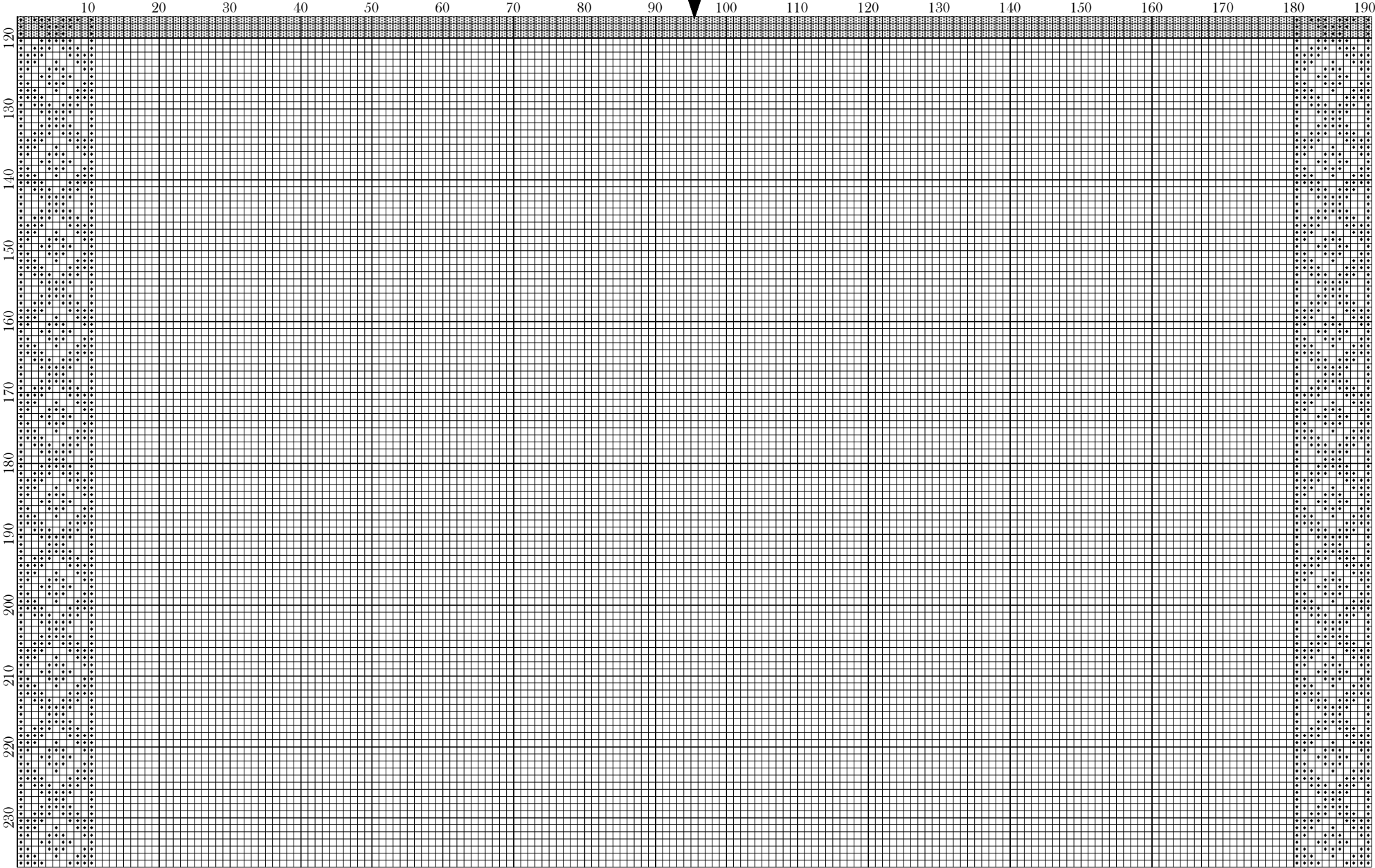


Weavers Animals Band Sampler - Border by Magical525



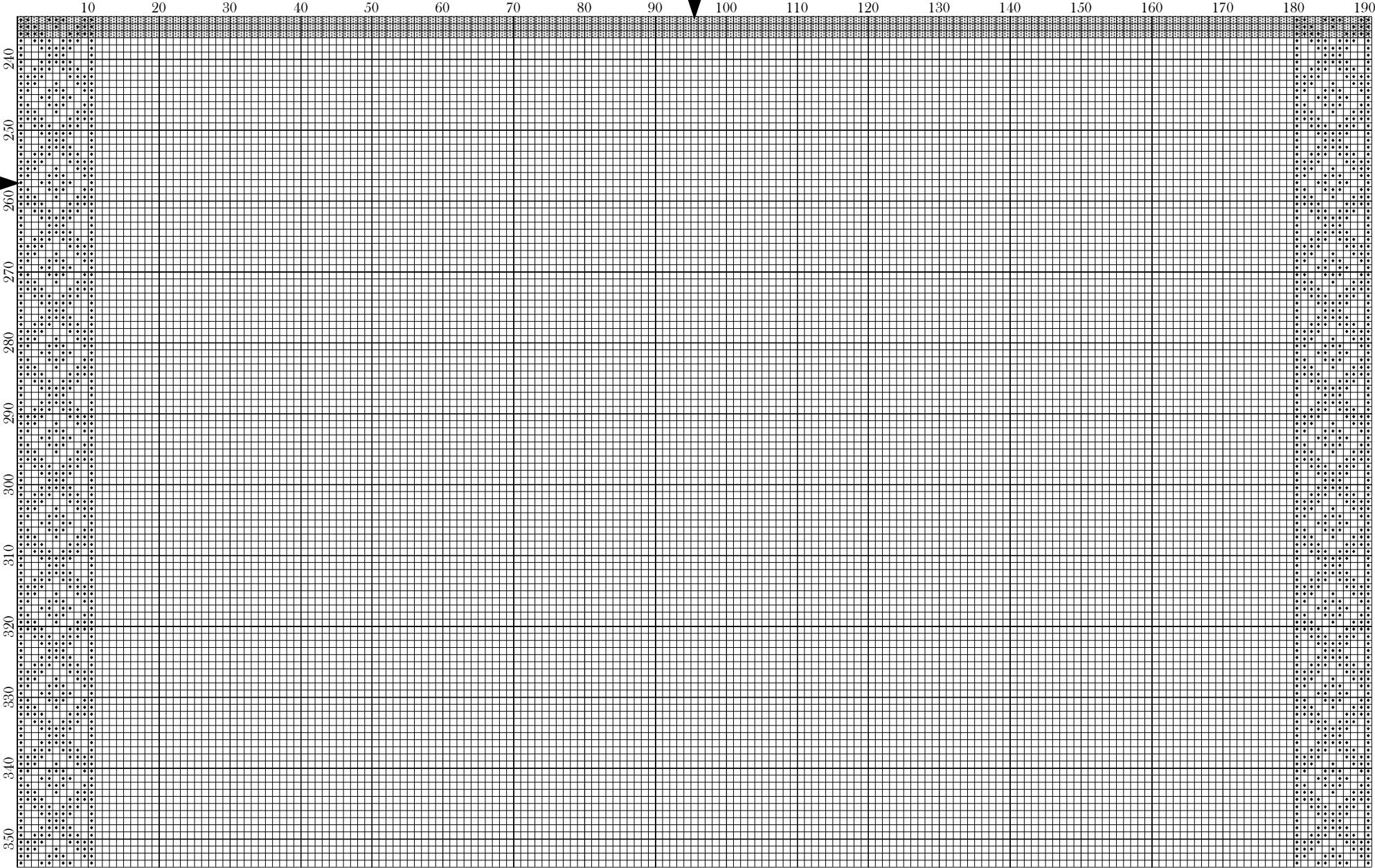
Copyright Magical525 2019

Weavers Animals Band Sampler - Border by Magical525



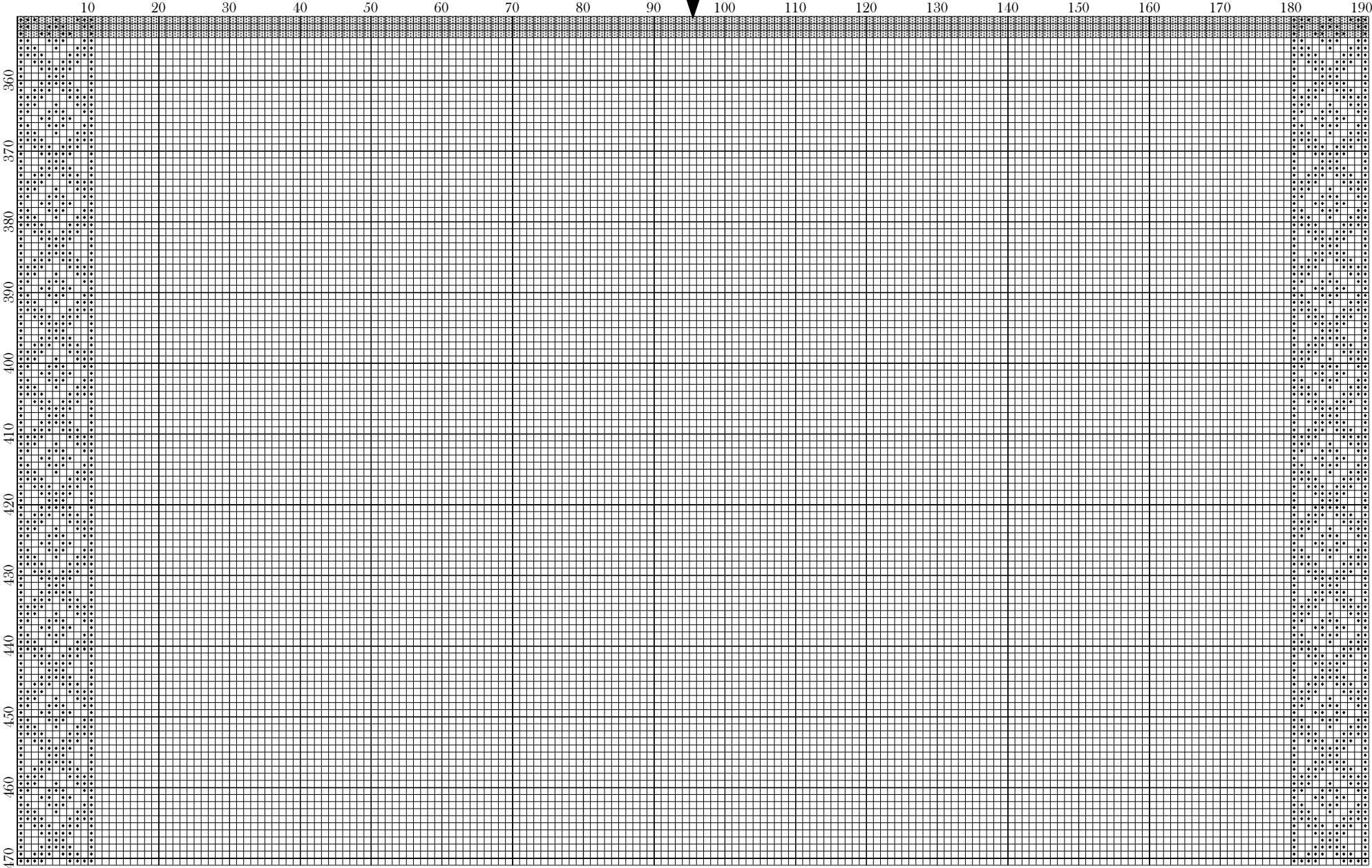
Copyright Magical525 2019

Weavers Animals Band Sampler - Border by Magical525



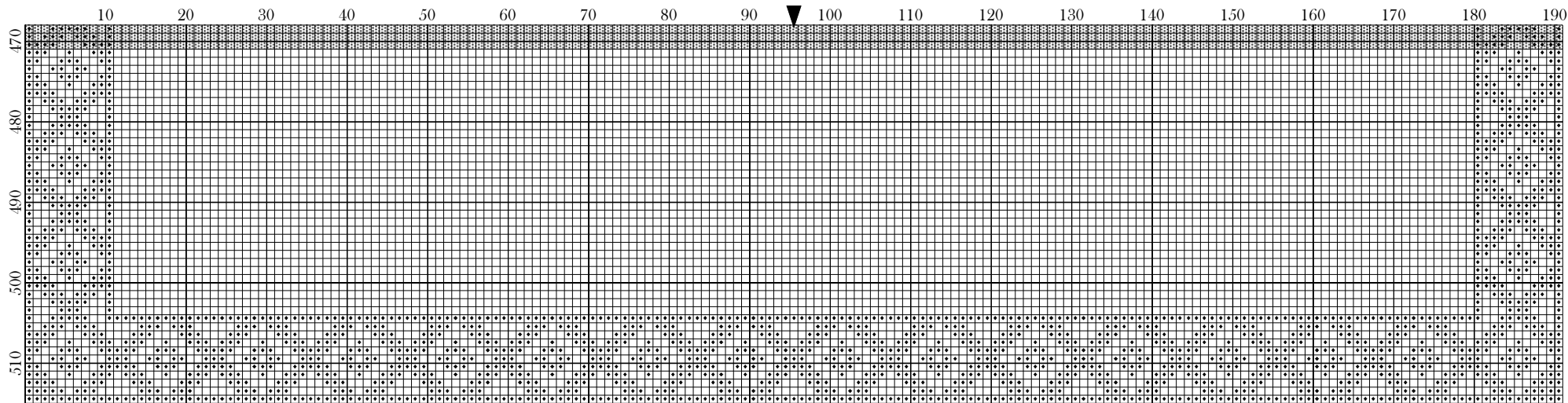
Copyright Magical525 2019

Weavers Animals Band Sampler - Border by Magical525



Copyright Magical525 2019

Weavers Animals Band Sampler - Border by Magical525



Copyright Magical525 2019


Legend:

◆ ■ DMC-820

Weavers Animals Band Sampler - Border

Author: Magical525
Copyright: Copyright Magical525 2019
Website: <http://MagicalQuilts.blogspot.com>
Grid Size: 191W x 515H
Design Area: 13.64" x 36.79" (191 x 515 stitches)

Legend:

 [2] DMC 820 royal blue - vy dk (9694 stitches, 3.9 skeins)

Welcome to the border of the Weavers Animals Band Sampler SAL!

Notes:

- I have made the pattern so it fits on five pages for the pattern and a single page for the notes. It's rotated to landscape mode - I would advise against printing this in portrait mode.

Please do leave a message on my blog, <http://magicalquilts.blogspot.com/>, mention @Magical525 on twitter or in the SAL Facebook group (linked in the top link) if you make this as I'd love to see the results! I use #WeaversAnimalsSAL as the tag on most social media.

This pattern was given for your own personal use on <http://magicalquilts.blogspot.com/>. You may not sell this pattern, nor may you offer kits with this pattern. You may not sell embroideries made with this pattern, it was made for personal use only.

Please do not post this pattern to other sites but refer back to the blog post. This includes sites such as Pinterest and Facebook! So for example saying "I stitched this and you can get the pattern here" with a link is allowed but saving the pattern and uploading it as a file to Facebook or Pinterest is not, nor is posting a photo of your stitching with the pattern showing.

You may of course share your finished results where you like, it's just the pattern itself that may not be shared