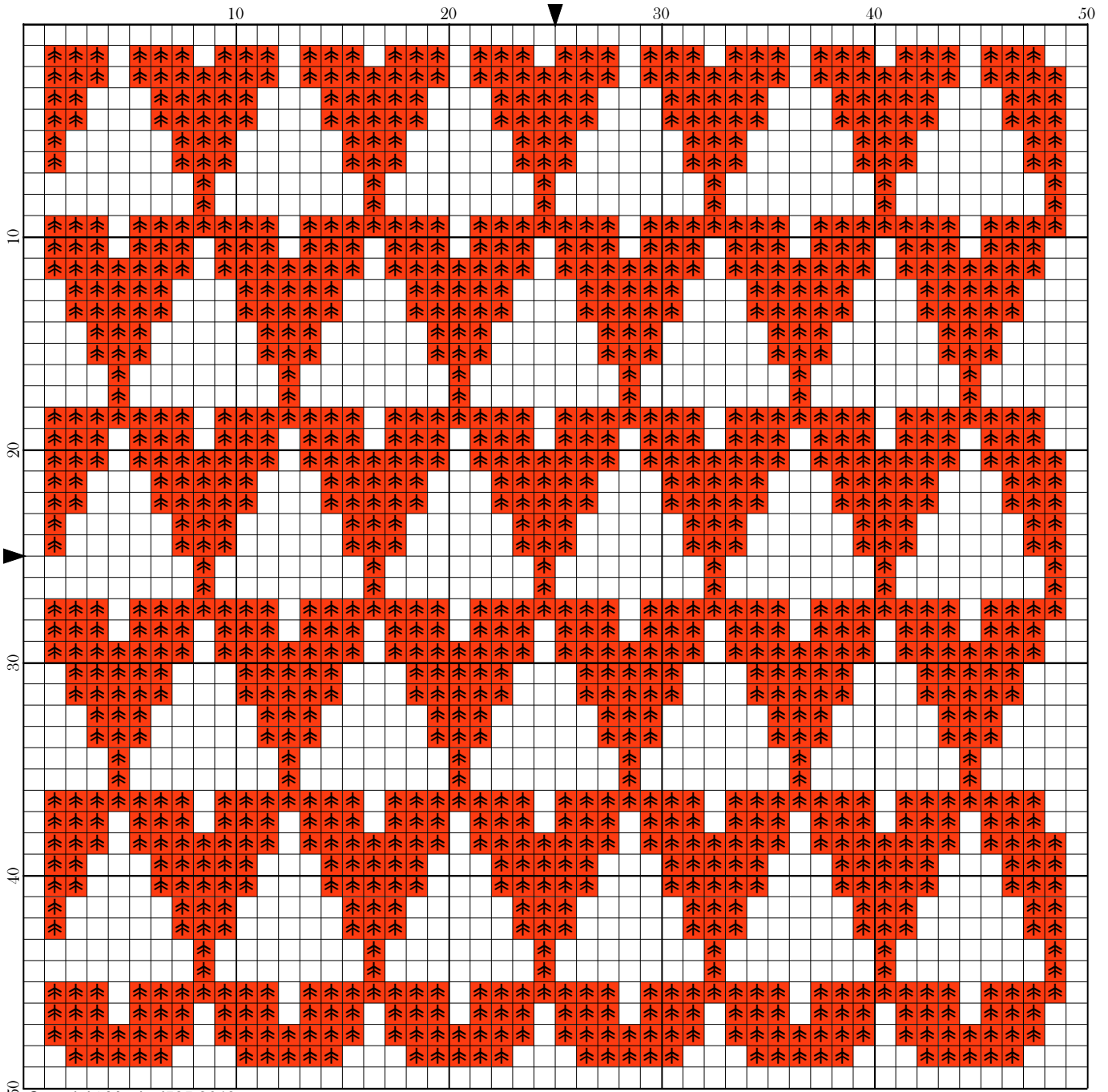




Christmas Trees - Alternate Pattern by Magical525




Copyright Magical525 2019

Legend:
  DMC-606

Christmas Trees - Alternate Pattern

Author: Magical525
Copyright: Copyright Magical525 2019
Website: <http://MagicalQuilts.blogspot.com>
Grid Size: 50W x 50H
Design Area: 3.43" x 3.43" (48 x 48 stitches)

Legend:

 [2] DMC 606 burnt orange-red (1248 stitches, 0.5 skeins)

Welcome to the December 50 x 50 for 2019! Each month you get a new pattern that is 50 x 50 stitches.

This is the pattern for the alternate version.

Please remember that if you plan to use the two patterns together that this pattern is one stitch per side smaller so you need to have a larger distance between the stitching and the seam on this side.

Please do leave a message on my blog, <http://magicalquilts.blogspot.com/>, mention @Magical525 on twitter or in the SAL Facebook group (linked in the top link) if you make this as I'd love to see the results! I use #50x50SAL as the tag on most social media.

This pattern was given for your own personal use on <http://magicalquilts.blogspot.com/>. You may not sell this pattern, nor may you offer kits with this pattern. You may not sell embroideries made with this pattern, it was made for personal use only.

Please do not post this pattern to other sites but refer back to the blog post. This includes sites such as Pinterest and Facebook! So for example saying "I stitched this and you can get the pattern here" with a link is allowed but saving the pattern and uploading it as a file to Facebook or Pinterest is not, nor is posting a photo of your stitching with the pattern showing.

You may of course share your finished results where you like, it's just the pattern itself that may not be shared