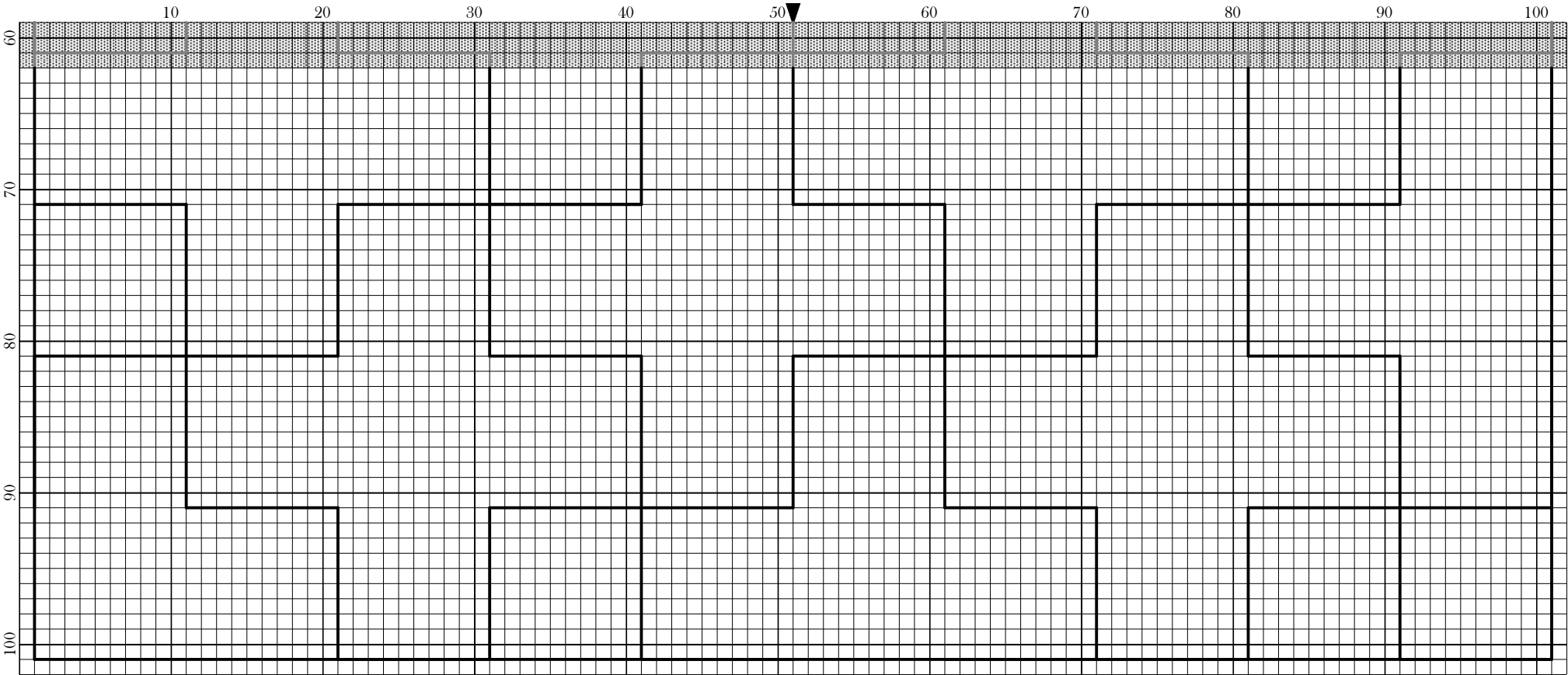


Copyright Magical525 2019



Copyright Magical525 2019

Backstitches:
— DMC-310

Blackwork SAL - Plusses Grid

Author: Magical525
Copyright: Copyright Magical525 2019
Website: <http://MagicalQuilts.blogspot.com>
Grid Size: 102W x 102H
Design Area: 7.14" x 7.14" (100 x 100 stitches)

Backstitch Lines:
———— DMC-310 black (119.29 inches, 0.1 skeins)

Welcome to the grid of the Blackwork SAL!

This is the plusses grid

Notes:

- I have made the pattern so it fits on two pages for the pattern and a single page for the notes. It's rotated to landscape mode - I would advise against printing this in portrait mode.

Please do leave a message on my blog, <http://magicalquilts.blogspot.com/>, mention @Magical525 on twitter or in the SAL Facebook group (linked in the top link) if you make this as I'd love to see the results! I use #BlackworkSAL as the tag on most social media.

This pattern was given for your own personal use on <http://magicalquilts.blogspot.com/>. You may not sell this pattern, nor may you offer kits with this pattern. You may not sell embroideries made with this pattern, it was made for personal use only.

Please do not post this pattern to other sites but refer back to the blog post. This includes sites such as Pinterest and Facebook! So for example saying "I stitched this and you can get the pattern here" with a link is allowed but saving the pattern and uploading it as a file to Facebook or Pinterest is not, nor is posting a photo of your stitching with the pattern showing.

You may of course share your finished results where you like, it's just the pattern itself that may not be shared