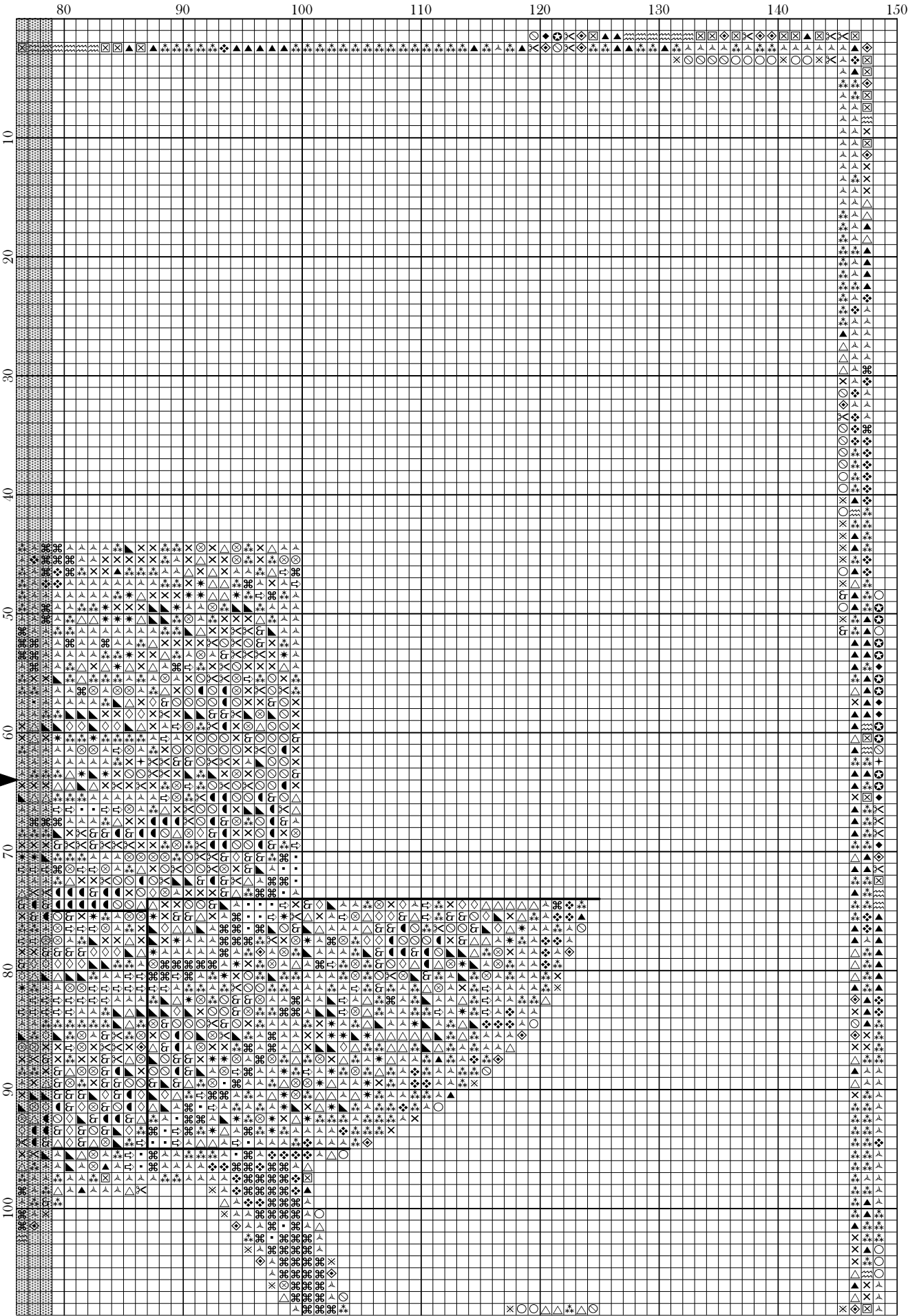
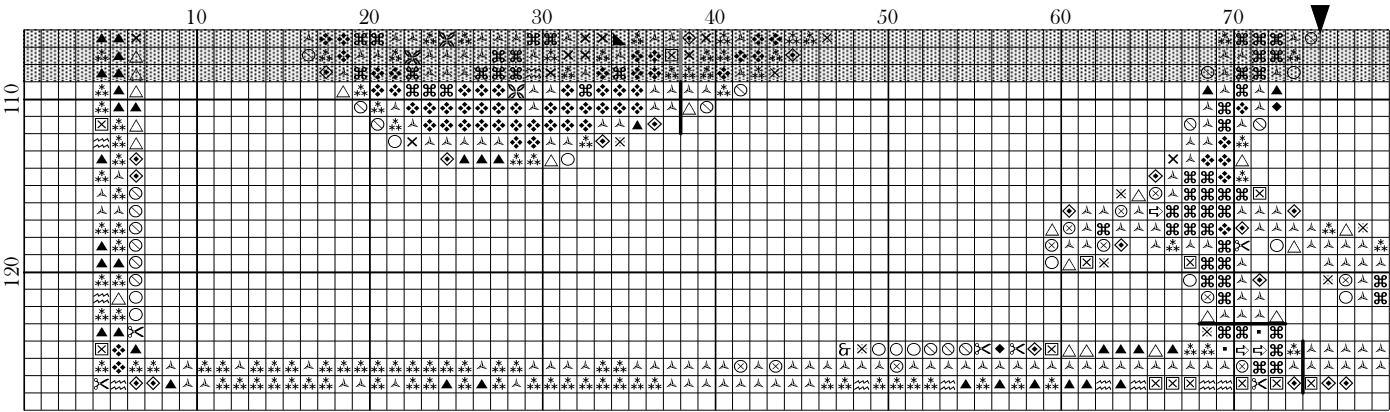


Copyright Magical525 2019

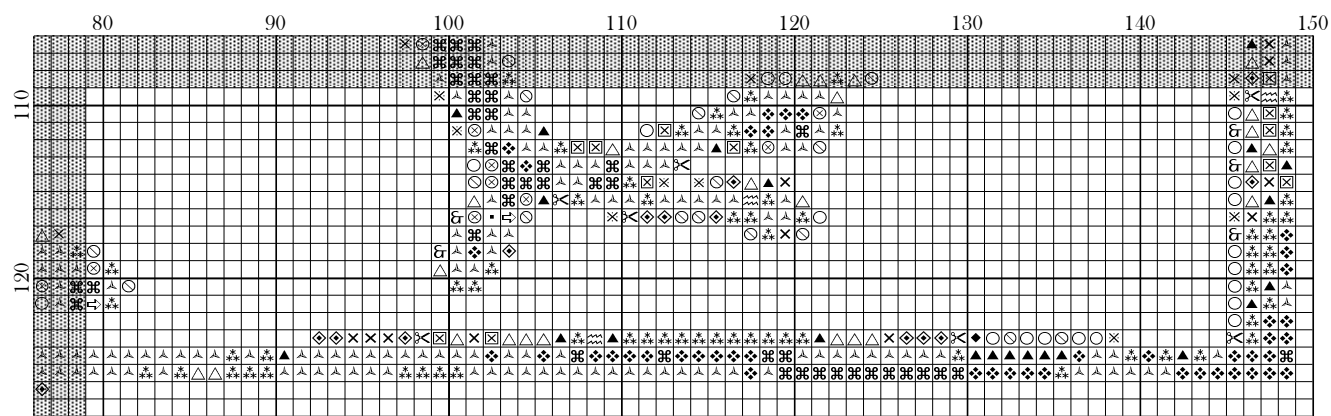




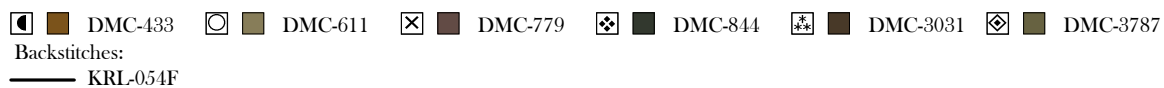
Copyright Magical525 2019

Legend:

	DMC-154		DMC-451		DMC-640		DMC-801		DMC-938		DMC-3371		DMC-3790
	DMC-310		DMC-535		DMC-645		DMC-838		DMC-939		DMC-3740		DMC-3799
	DMC-413		DMC-610		DMC-647		DMC-839		DMC-3021		DMC-3781		























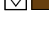



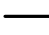

Copyright Magical525 2019



# Medieval Owl - Part 9

**Author:** Magical525  
**Copyright:** Copyright Magical525 2019  
**Website:** <http://magicalquilts.blogspot.com>  
**Grid Size:** 150W x 128H  
**Design Area:** 7.30" x 6.30" (146 x 126 stitches)

## Legend:

	[2]	DMC	154	grape - vy lt	(107 stitches, 0.1 skeins)		[2]	DMC	838	beige brown - vy dk	(170 stitches, 0.1 skeins)
	[2]	DMC	310	black	(96 stitches, 0.1 skeins)		[2]	DMC	839	beige brown - dk	(167 stitches, 0.1 skeins)
	[2]	DMC	413	pewter gray - dk	(12 stitches, 0.1 skeins)		[2]	DMC	844	beaver gray - ul dk	(274 stitches, 0.1 skeins)
	[2]	DMC	433	brown - md	(72 stitches, 0.1 skeins)		[2]	DMC	938	coffee brown - ul dk	(161 stitches, 0.1 skeins)
	[2]	DMC	451	shell gray - dk	(29 stitches, 0.1 skeins)		[2]	DMC	939	navy blue - vy dk	(74 stitches, 0.1 skeins)
	[2]	DMC	535	ash gray - vy lt	(77 stitches, 0.1 skeins)		[2]	DMC	3021	brown gray - vy dk	(288 stitches, 0.1 skeins)
	[2]	DMC	610	drab brown - dk	(142 stitches, 0.1 skeins)		[2]	DMC	3031	mocha brown - vy dk	(881 stitches, 0.3 skeins)
	[2]	DMC	611	drab brown	(87 stitches, 0.1 skeins)		[2]	DMC	3371	black brown	(1403 stitches, 0.4 skeins)
	[2]	DMC	640	beige gray - vy dk	(55 stitches, 0.1 skeins)		[2]	DMC	3740	antique violet - dk	(11 stitches, 0.1 skeins)
	[2]	DMC	645	beaver gray - vy dk	(82 stitches, 0.1 skeins)		[2]	DMC	3781	mocha brown - dk	(380 stitches, 0.1 skeins)
	[2]	DMC	647	beaver gray - md	(36 stitches, 0.1 skeins)		[2]	DMC	3787	brown gray - dk	(115 stitches, 0.1 skeins)
	[2]	DMC	779	cocoa - dk	(575 stitches, 0.2 skeins)		[2]	DMC	3790	beige gray - ul dk	(244 stitches, 0.1 skeins)
	[2]	DMC	801	coffee brown - dk	(75 stitches, 0.1 skeins)		[2]	DMC	3799	pewter gray - vy dk	(441 stitches, 0.1 skeins)

## Backstitch Lines:

———— KRL-054F Lemon-Lime (13.45 inches, 0.1 skeins)

Welcome to the ninth part of the Medieval Owl SAL!

## Notes:

- This month you are getting a bit of wing/body.
- The owl has many colours that are just a few stitches here and there. It's probably not a good idea to make too large of a jump from one colour to the next. Small jumps are ok though.
- Check the grid picture in the overview post to see when you get which bit.

Please do leave a message on my blog, <http://magicalquilts.blogspot.com/>, mention @Magical525 on twitter or in the SAL Facebook group (linked in the top link) if you make this as I'd love to see the results! I use #MedievalOwlSAL as the tag on most social media.

This pattern was given for your own personal use on <http://magicalquilts.blogspot.com/>. You may not sell this pattern, nor may you offer kits with this pattern. You may not sell embroideries made with this pattern, it was made for personal use only.

Please do not post this pattern to other sites but refer back to the blog post. This includes sites such as Pinterest and Facebook! So for example saying "I stitched this and you can get the pattern here" with a link is allowed but saving the pattern and uploading it as a file to Facebook or Pinterest is not, nor is posting a photo of your stitching with the pattern showing.

You may of course share your finished results where you like, it's just the pattern itself that may not be shared.