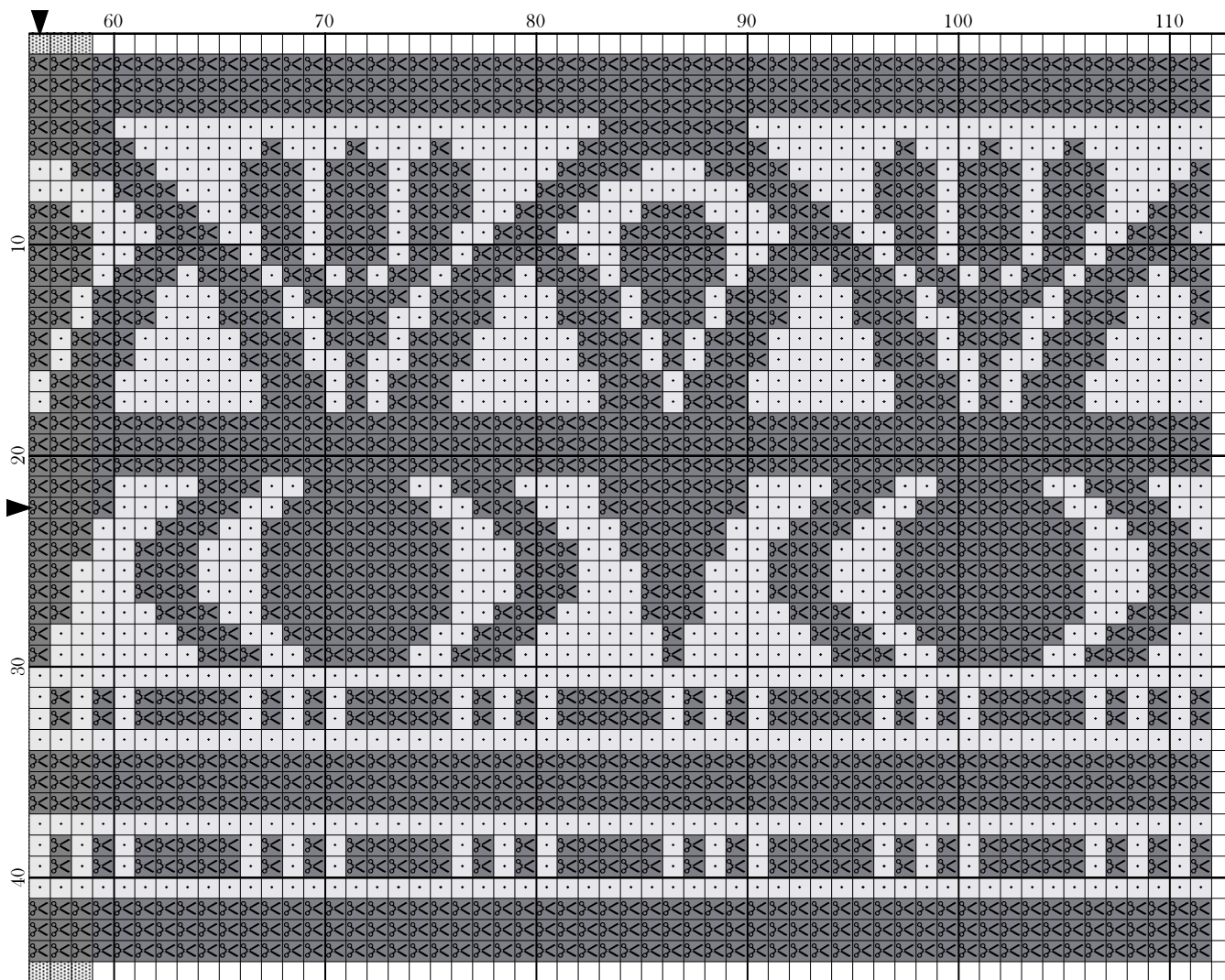


Copyright Magical525 2017

Legend:




Copyright Magical525 2017


□ □ DMC-762 ⊠ ⊠ DMC-414

Theodosius Hagia Sofia

Author: Magical525
Copyright: Copyright Magical525 2017
Website: <http://magicalquilts.blogspot.com>
Grid Size: 113W x 45H
Design Area: 6.17" x 2.39" (111 x 43 stitches)

Legend:

 [2] DMC 762 pearl gray - vy lt (1716 stitches, 0.5 skeins)

 [2] DMC 414 steel gray - dk (3057 stitches, 1.0 skeins)

This week's pattern was inspired by a stone archway section that came from the Theodosius Hagia Sofia. Changing something that is curved into a straight border was a bit of a challenge so it's not perfectly aligned the way it was in the archway but its pretty close.

If you don't want to do it in grey tones you could always use variegated threads for this as it would look amazing!

Please do leave a message on my blog, <http://magicalquilts.blogspot.com/>, if you make this as I'd love to see the results!

This pattern was given for your own personal use on <http://magicalquilts.blogspot.com/>. You may not sell this pattern, nor may you offer kits with this pattern. You may not sell embroideries made with this pattern, it was made for charitable or personal use only.

Please do not post this pattern to other sites but refer back to the blog post. This includes sites such as Pinterest and Facebook! So for example saying "I stitched this and you can get the pattern here" with a link is allowed but saving the pattern and uploading it as a file to Facebook or Pinterest is not.

You may of course share your finished results where you like, it's just the pattern itself that may not be shared.